

PHILADELPHIA WORK FIRST DATA SUMMARY

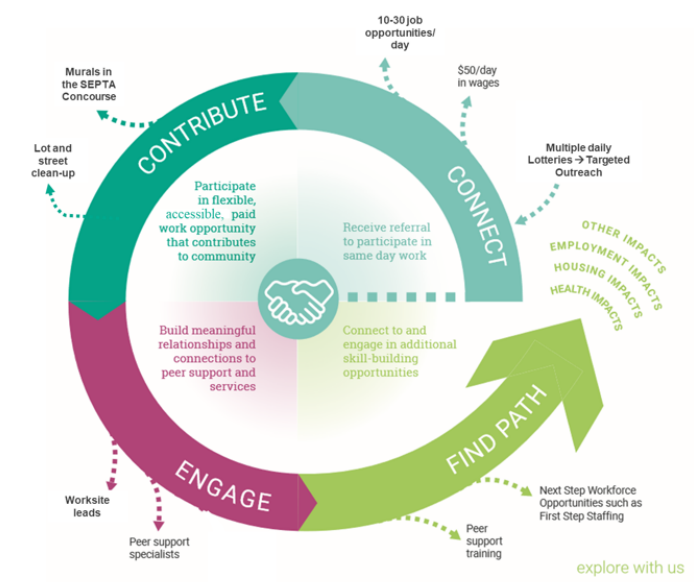
\$203,750 paid

4075 payments to 831 people

Across the first 19 months of the program (through November 15, 2020)

- On 4/23/2019, Work First began offering jobs to 10 housing-insecure individuals per day in Center City
- The over several months, the program expanded to offer 30 slots per day at two separate locations.
- On 3/16/2020, COVID-19 forced the program to close down.
- On 7/14/2020, the program returned--with longer-term engagements and CDC-recommended COVID precautions

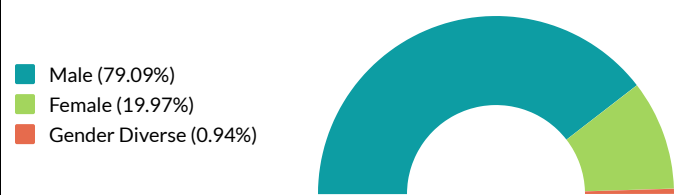
The charts and figures on this page are drawn from daily payment logs and voluntary participant surveys.



58% of People Identified as Black/African American



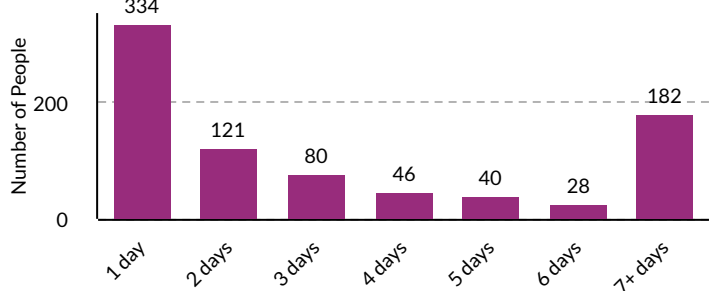
79% of People Identified as Male



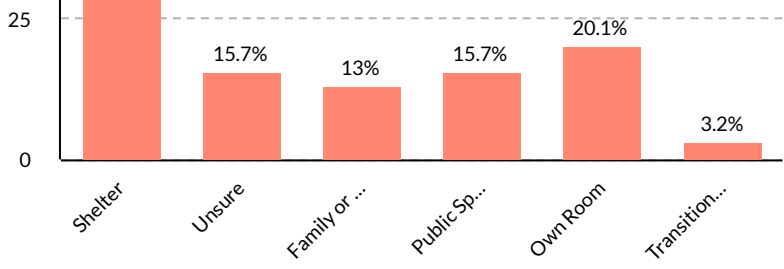
Multiple Age Groups were Represented



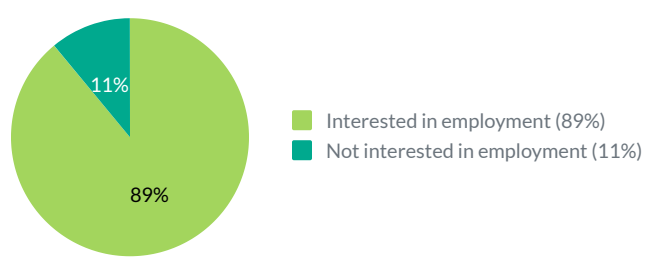
21% have Worked 7+ Times



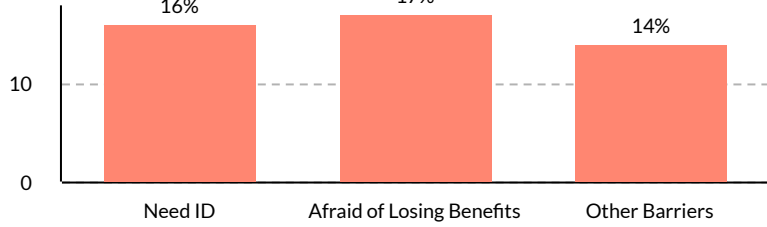
80% of People Are Experiencing Housing Insecurity



89% Interested in Employment



Top Identified Barriers Include Needing IDs and Concerns About Losing Benefits



40% Worked in Last Year

