
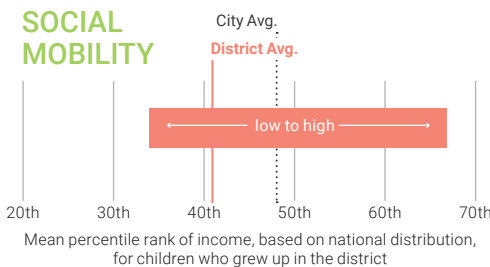
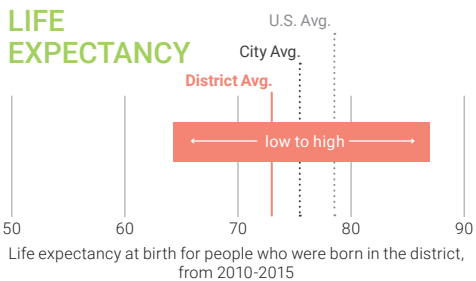


District 5 ranks 7th among all districts. Behavioral health utilization is high and may help mitigate the elevated risks, such as exposure to childhood trauma. There is variability across life expectancy and social mobility across the district.

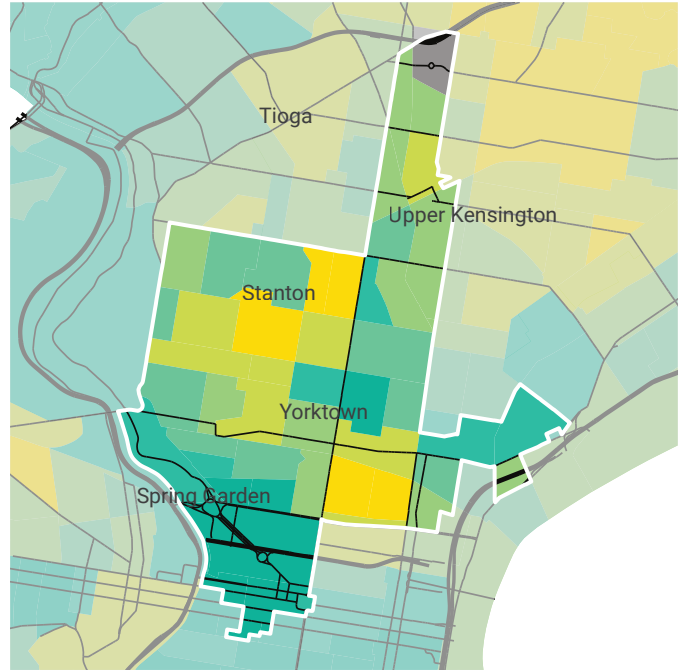
**Philadelphia Children's Health & Well-being**

	PERCENT ENGLISH-ONLY	<b>79%</b>
	PERCENT FOREIGN-BORN	<b>7%</b>
	PERCENT CHILDREN (0-17)	<b>19%</b> (28,344)
RACE/ETHNICITY		
MAJORITY	SECOND-LARGEST	
<b>AFRICAN-AMERICAN<sup>†</sup></b>	<b>WHITE<sup>†</sup></b>	

The average life expectancy and social mobility is lower than the city average. Among all residents, 19% are children. There are 3 Health Dept. health centers, 10 Federally Qualified Health Centers, 37 district schools, 2 community schools, 8 selected Rebuild sites, and 54 parks contained within or bordering the district.

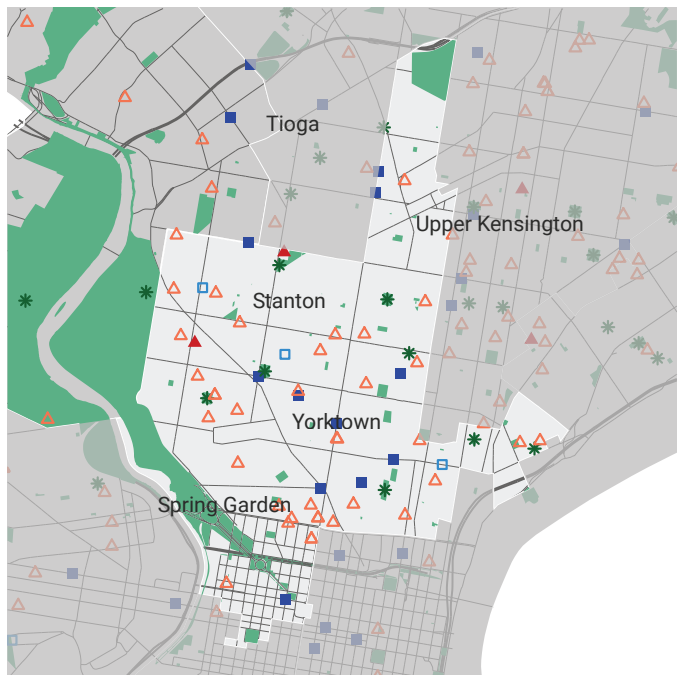


**OVERALL SCORE**



**MITIGATING ASSETS**

- Federally Qualified Health Center
- Health Dept. Health Center
- ▲ Community Schools
- ✳ Selected Rebuild sites
- △ Schools
- Parks



\* Districts are ranked from 1 (best scoring) to 10 (worst scoring) †Non-hispanic

# Philadelphia Children's Health & Well-being

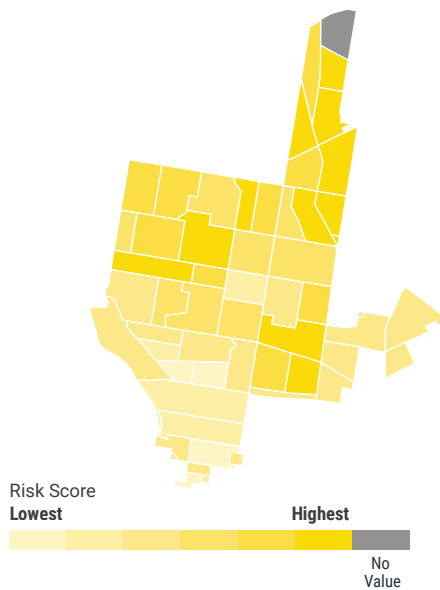
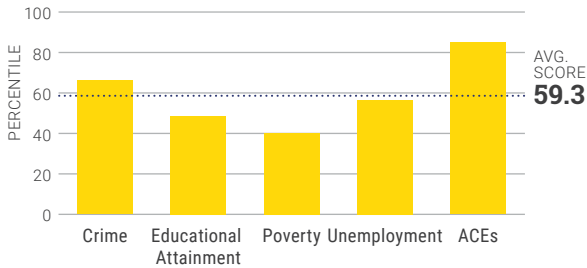
COUNCIL DISTRICT **5**

RANKING:

**7**

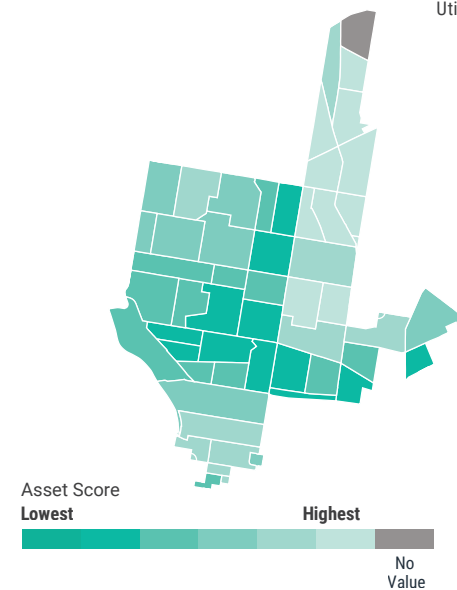
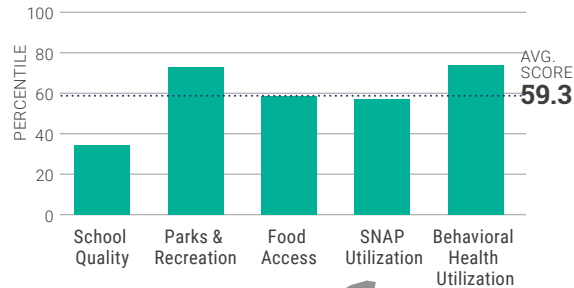
## RISK SCORE

Adults experiencing an Adverse Childhood Experience (ACE) is in the 85th percentile. Shooting incidents and the unemployment rate are in the 66th and 56th percentiles.



## ASSET SCORE

There is high behavioral health utilization and parks and recreation access. School quality is below the 40th percentile.



## MITIGATING ASSETS

	District 5 Score	Best Score (District #)	Comparison
School Quality	<b>34.2</b>	<b>82.3</b> (10)	
Park and Recreation Access	<b>72.9</b>	<b>72.9</b> (5)	
Fresh Food Access	<b>58.7</b>	<b>73.4</b> (1)	
SNAP Utilization	<b>56.9</b>	<b>77.9</b> (7)	
Children's Behavioral Health Services Utilization	<b>73.9</b>	<b>78.4</b> (7)	

## KEY TAKEAWAY

District 5 has assets to build upon, particularly behavioral health utilization and access to parks and recreation. That said, risks remain in the district that should be addressed, including exposure to childhood trauma and crime. It is recommended that behavioral health centers focus on these risks, especially given the high utilization in the district.

WINTER 2019

Data Sources: 2016 ACS 5-Year Estimates, City of Philadelphia Crime Statistics, PHMC

For full report, see [scattergoodfoundation.org](http://scattergoodfoundation.org)

SCATTERGOOD  
THINK|DO|SUPPORT

