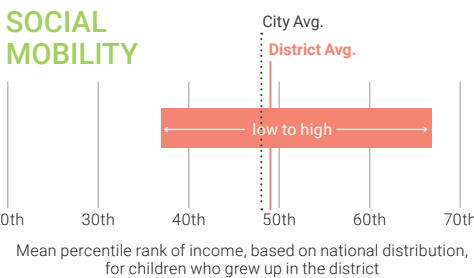
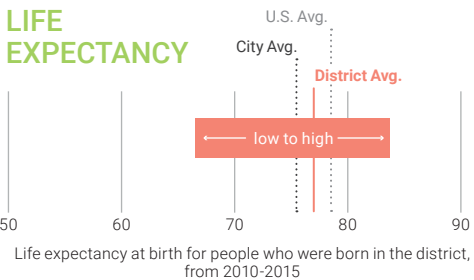


District 4 ranks 4th among all districts. There are relatively low risks in the district; however, the assets are also relatively low and need to be strengthened.

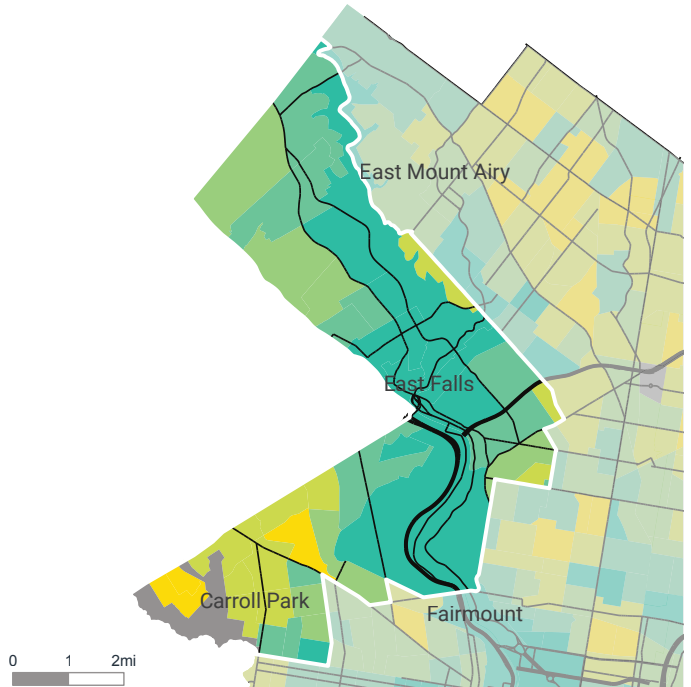
Philadelphia Children's Health & Well-being

	PERCENT ENGLISH-ONLY	86%
	PERCENT FOREIGN-BORN	7%
	PERCENT CHILDREN (0-17)	19% (29,346)
RACE/ETHNICITY		
MAJORITY	SECOND-LARGEST	
AFRICAN-AMERICAN†	WHITE†	

The life expectancy and social mobility is above the city average. However, there is variability in life expectancy and social mobility across the district. Among all residents, 19% are children. There are no Health Dept. health centers, 3 Federally Qualified Health Centers, 18 district schools, 1 community school, 8 selected Rebuild sites, and 41 parks contained within or bordering the district.

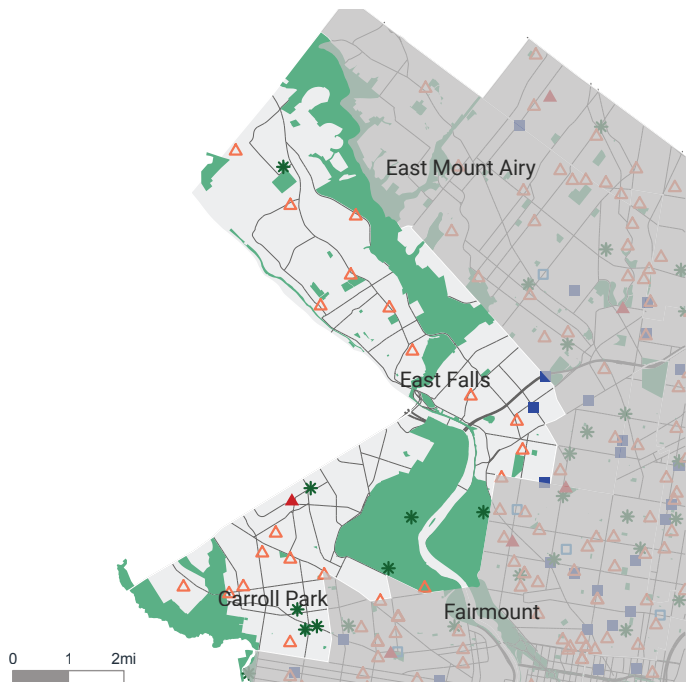


OVERALL SCORE



MITIGATING ASSETS

- Federally Qualified Health Center
- Health Dept. Health Center
- ▲ Community Schools
- △ Schools
- ✳ Selected Rebuild sites
- Parks



* Districts are ranked from 1 (best scoring) to 10 (worst scoring) †Non-hispanic

Philadelphia Children's Health & Well-being

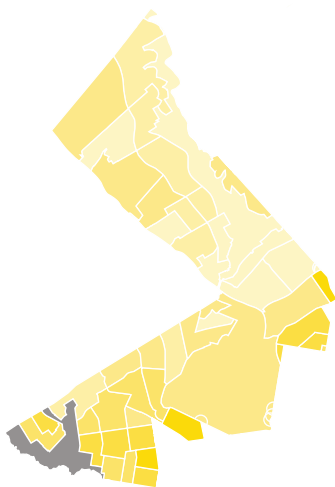
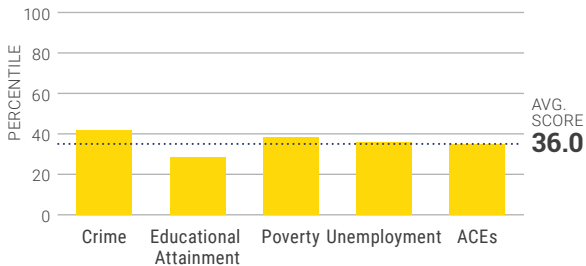
COUNCIL DISTRICT **4**

RANKING:

4

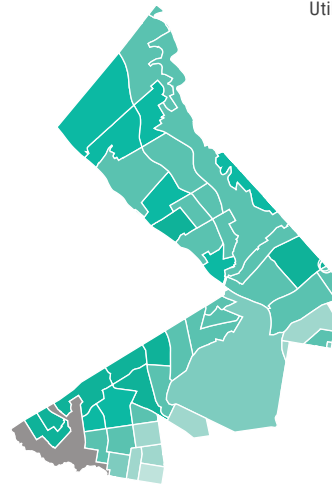
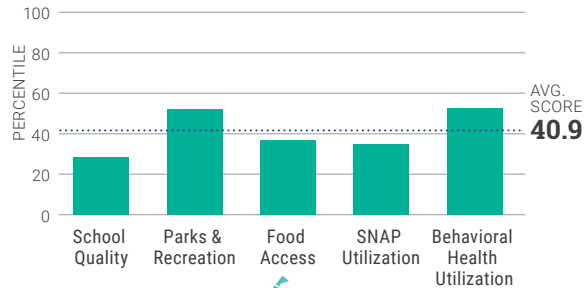
RISK SCORE

Shooting incidents are in the 41st percentile. The unemployment rate is in the 36th percentile, similar to family poverty which is in the 38th percentile.



ASSET SCORE

There is relatively high behavioral health utilization and access to parks and recreation. School quality is in the 30th percentile.



MITIGATING ASSETS

	District 4 Score	Best Score (District #)	Comparison
School Quality	28.3	82.3 (10)	
Park and Recreation Access	51.9	72.9 (5)	
Fresh Food Access	37.0	73.4 (1)	
SNAP Utilization	34.6	77.9 (7)	
Children's Behavioral Health Services Utilization	52.7	78.4 (7)	

KEY TAKEAWAY

District 4 has assets to build upon, particularly behavioral health utilization. School quality is of concern and should be addressed. The district variability in life expectancy and social mobility suggests there are inequities across the district.

WINTER 2019

Data Sources: 2016 ACS 5-Year Estimates, City of Philadelphia Crime Statistics, PHMC

For full report, see scattergoodfoundation.org

SCATTERGOOD
THINK|DO|SUPPORT

