

THINK|DO|SUPPORT
GOOD

How Can a **Same Day Work Opportunity** Using Participatory Art-Making and Peer Support Help Improve the Lives of Individuals Experiencing Economic Instability?

SAME DAY WORK

Drawing on the successful experiences of other cities in offering same day work and pay, Mural Arts and Mental Health Partnerships proposed a mural-making work opportunity for individuals experiencing economic instability.

The opportunity specifically targeted participants experiencing economic instability in Center City, Philadelphia. The grant awarded by the Barra Foundation included resources to support a set of discovery interviews and create a theory of change that represents initial efforts.

This report synthesizes the information collected during a three-month discovery phase to inform the design, implementation, and evaluation of a “same day work” program in Philadelphia.

How Can a Same Day Work Opportunity Using Participatory Art-Making and Peer Support Help Improve the Lives of Individuals Experiencing Economic Instability?

THEORY OF CHANGE

Based on findings from promising practice cities and key stakeholders in Philadelphia, we developed a working draft theory of change that presents an overview of what we hope will transpire in this work over the next two years.

This is not intended as a set of steps to follow, but rather offers a snapshot of the aspirations we have for this work. We hope this offers a framework for planning, reflecting on, and communicating about the work.

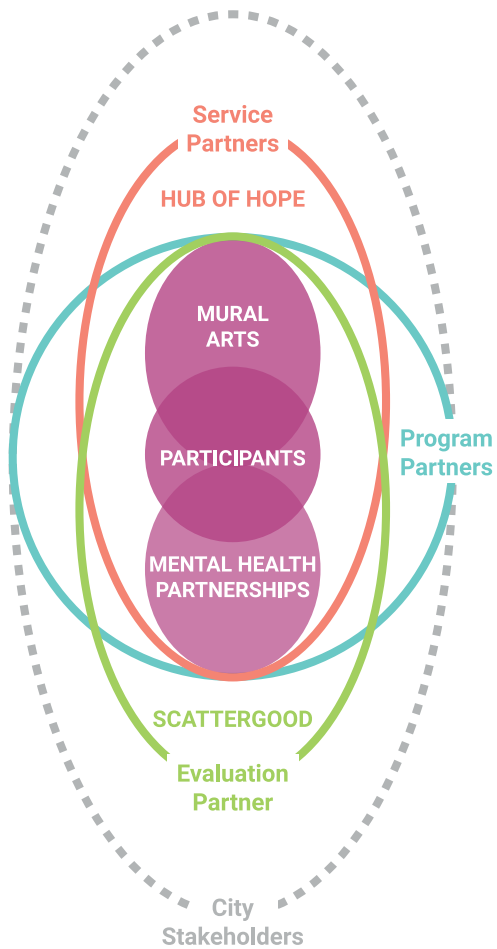
CORE VALUES		PARTICIPANT AGENCY Engagement and involvement of participants in all decision-making		PARTICIPANT-CENTERED PRACTICE Focus on practice that is responsive to participant experience, including trauma-informed and racially equitable practice		SYSTEM-LEVEL ALIGNMENT Connection of this work to city-wide priorities (e.g., workforce, economic development, and housing) and other similar programs		COLLABORATIVE LEARNING Reflection and feedback from a broad range of stakeholders to foster shared and lasting insights		PUBLIC AWARENESS Attention to how this effort can help to change broader perspectives and stigmas
-------------	---	--	---	---	---	--	---	---	---	---


Collaborating with a range of partners and participants...


we will develop strong learning structures...

to test and explore the value and impact of a same day work approach in Philadelphia, and...

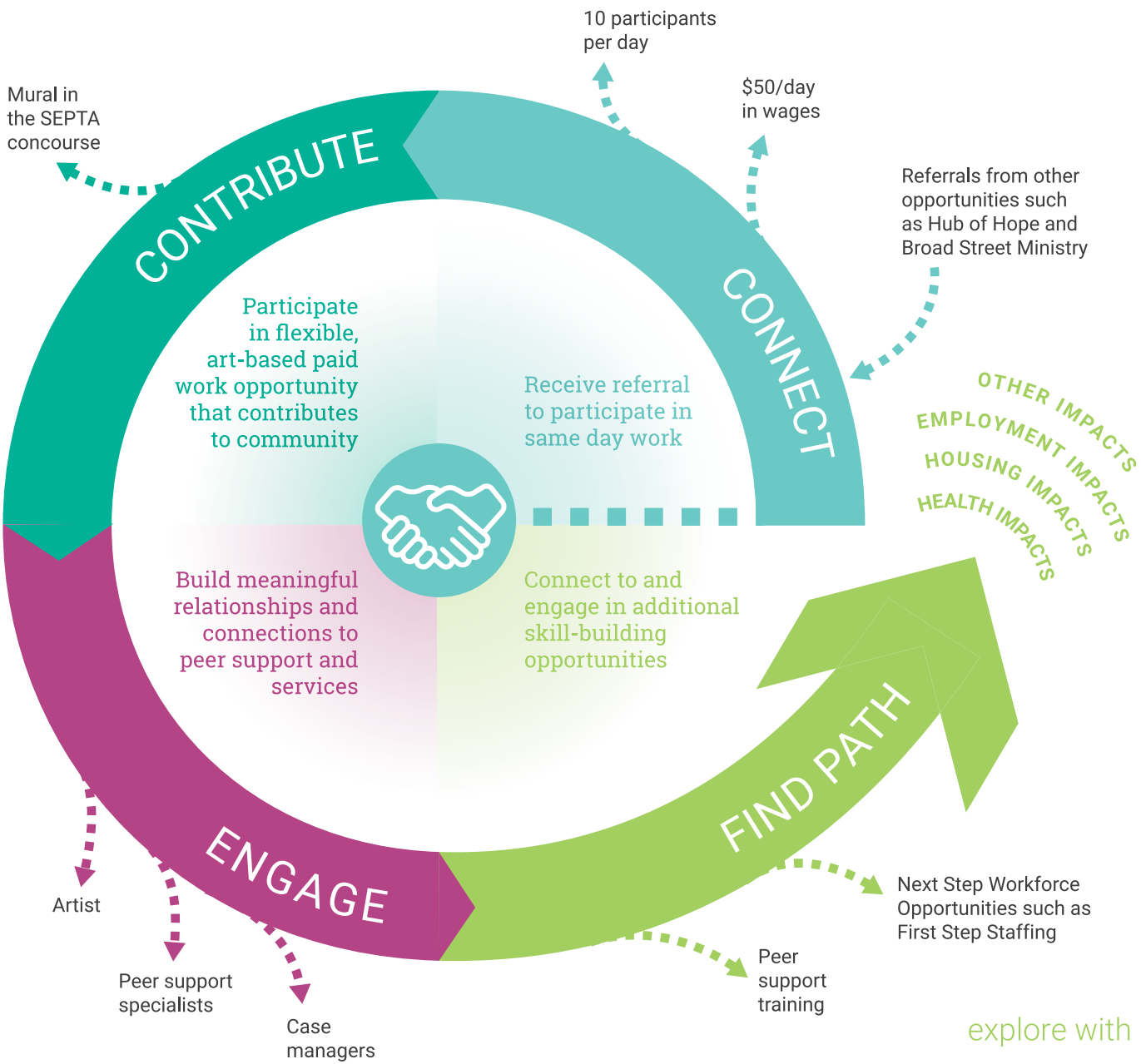
contribute to a better understanding of how same day work can support impact in our city.



 **Data Collection and Synthesis**
Systematic data collection across participants, practitioners, and partners of program elements

 **Implementation Team Reflection**
Regular pauses to reflect on practice and identify shifts to program implementation and design

 **Stakeholder Advisement**
Ongoing engagement of city partners to share learning and solicit feedback



- We will:**
- 1 Identify clear and relevant outcomes for and with participants and communities
 - 2 Identify same day work strategies that meet outcomes most effectively and efficiently
 - 3 Generate learning that influences other programs and city-wide strategies

collaborate with us

engage with us

explore with us

learn with us

Within the Center City Philadelphia area, a number of complementary programs and nascent efforts are underway, with the promise of more on the horizon. It is critical to connect this new same day work program to the broader ecosystem of existing supports. This will help to maximize impact and sustain the work.

What's next?

FOR COMMUNITY:

Seek out opportunities to support individuals across programs. Build pathways that are inclusive of multiple opportunities across multiple organizations and together advocate for broader policy needs and changes.

FOR CITY OFFICIALS:

Help support connections across the city, including among local community leaders, organizations, and constituents. Share knowledge about different programs, approaches, and potential connections with various stakeholders. Help to support greater and more nuanced public awareness and understanding around issues and policies supporting individuals experiencing economic insecurity.

FOR PRIVATE SECTOR:

Help financially support and work with social sector organizations that are supporting individuals and advocating for community-level changes that offer higher quality support for vulnerable Philadelphians. Consider ways that private-public partnerships can support community-level impact.

FOR PHILANTHROPY:

Offer resources that allow organizations to build, learn, and evolve programs. Support organizations in building additional capacities that foster high quality program development and implementation - such as project management, evaluation, and convening.

“Been the best thing for me, given me back my drive. I know I have people in my life I can talk to.”

– Camden Participant

“I like working in the parks. Being from here, giving back to the community, it feels good.”

– Camden Participant

“Same Day Work in Camden has given us a path to addressing some of the underlying causes of homelessness. Our hope is that over time this opportunity can continue to move people off the street.”

– Camden County Partner

Supported by



THE BARRA FOUNDATION



THE SELLER
FAMILY
FOUNDATION
Committed to Improving Lives

SCATTERGOOD
THINK|DO|SUPPORT

For the complete report, visit
scattergoodfoundation.org