

# Same Day Work in Philadelphia: Aspiration, Collaboration, and Implementation

February 25, 2019





**THE BARRA  
FOUNDATION**



**THE SELLER  
FAMILY  
FOUNDATION**  
*Committed to Improving Lives*

Welcome



How we got  
here...





Core Program Model



Set of Core Values



Identification of Learning  
Structures and Outcomes



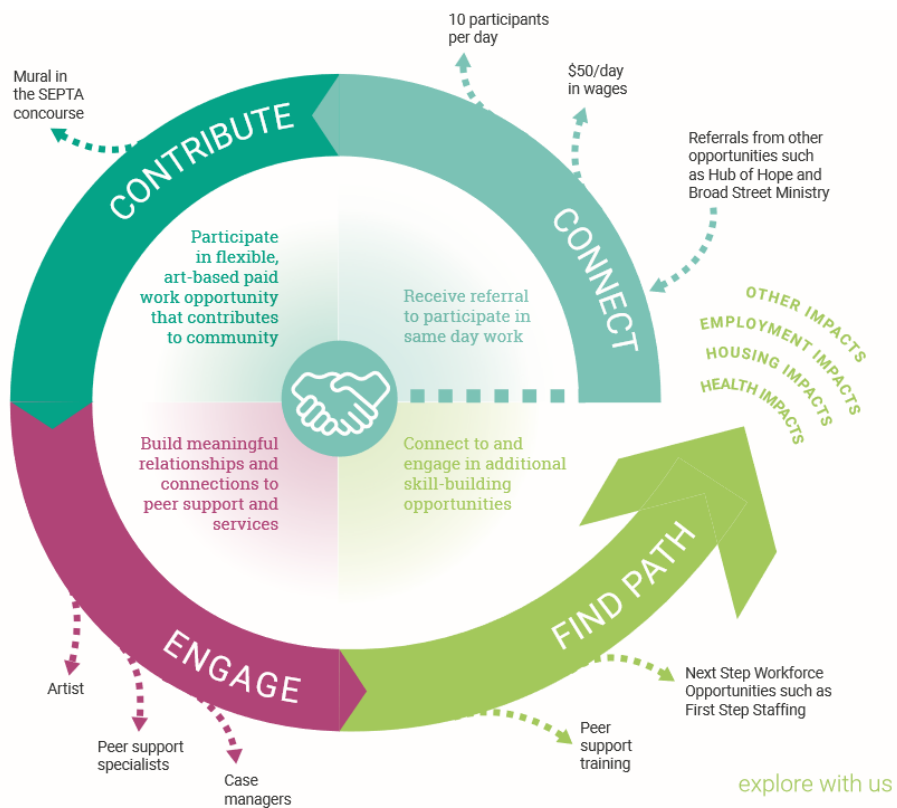
Building and Connecting

**What emerged from our planning process?**



# Aspiration

## Core Program Model



## Core Values



### PARTICIPANT AGENCY

Engagement and involvement of participants in all decision-making



### PARTICIPANT- CENTERED PRACTICE

Focus on practice that is responsive to participant experience, including trauma-informed and racially equitable practices



### SYSTEM-LEVEL ALIGNMENT

Connection of this work to city-wide priorities (e.g., workforce, economic development, and housing) and other similar programs



### COLLABORATIVE LEARNING

Reflection and feedback from a broad range of stakeholder to foster shared learning and lasting insights



### PUBLIC AWARENESS

Attention to how this effort can help to change broader perspectives and stigmas



# Learning Structures



## Data Collection and Synthesis

Systematic data collection across participants



## Implementation Team Reflection

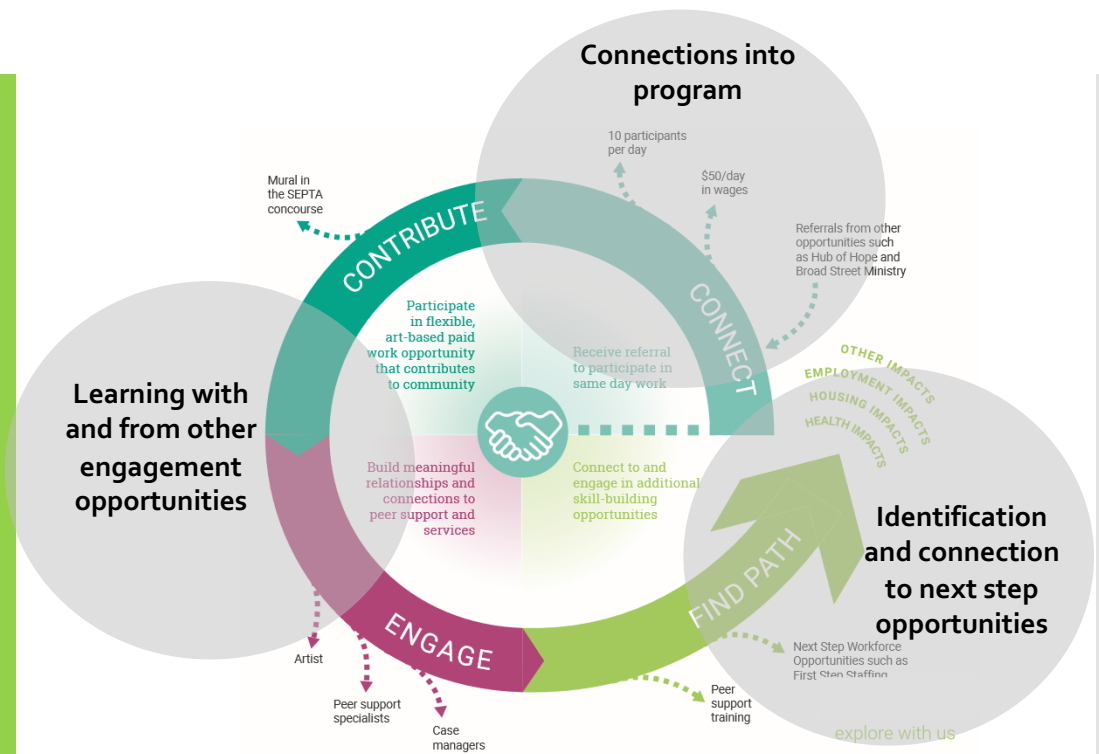
Regular pauses to reflect on practice and identify shifts to program implementation and design



## Stakeholder Advisement

Ongoing engagement of city partners to share learning and solicit feedback

# Ecosystem Building and Partnership



## Defining Success

### We will:

- 1 Identify clear and relevant outcomes for and with participants and communities
- 2 Identify same day work strategies that meet outcomes most effectively and efficiently
- 3 Generate learning that influences other programs and city-wide strategies

# Theory of Change

## How Can a Same Day Work Opportunity Using Participatory Art-Making and Peer Support Help Improve the Lives of Individuals Experiencing Economic Instability?

### THEORY OF CHANGE

Based on findings from promising practice cities and key stakeholders in Philadelphia, we developed a working draft theory of change that presents an overview of what we hope will transpire in this work over the next two years.

This is not intended as a set of steps to follow, but rather offers a snapshot of the aspirations we have for this work. We hope this offers a framework for planning, reflecting on, and communicating about the work.

CORE VALUES	PARTICIPANT AGENCY	PARTICIPANT-CENTERED PRACTICE	SYSTEM-LEVEL ALIGNMENT	COLLABORATIVE LEARNING	PUBLIC AWARENESS
	Engagement and involvement of participants in all decision-making	Focus on practice that is responsive to participant experience, including trauma-informed and racially equitable practice	Connection of this work to city-wide priorities (e.g. workforce, economic development, and housing) and other similar programs	Reflection and feedback from a broad range of stakeholders to foster shared and lasting insights	Attention to how this effort can help to change broader perspectives and stigmas

Collaborating with a range of partners and participants...



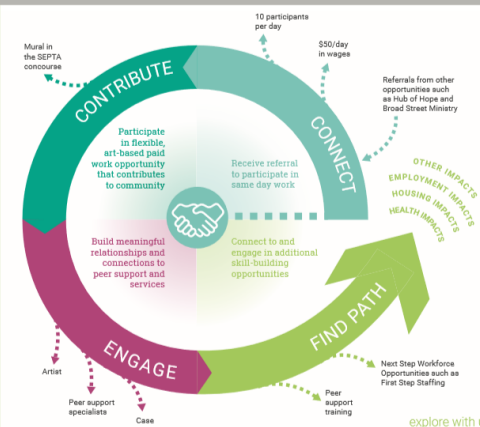
collaborate with us

we will develop strong learning structures...

- Data Collection and Synthesis**  
Systematic data collection across participants, practitioners, and partners of program elements
- Implementation Team Reflection**  
Regular pauses to reflect on practice and identify shifts to program implementation and design
- Stakeholder Advisement**  
Ongoing engagement of city partners to share learning and solicit feedback

engage with us

to test and explore the value and impact of a same day work approach in Philadelphia, and...




explore with us

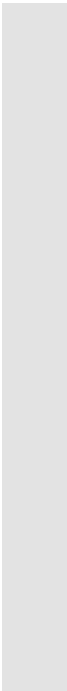

contribute to a better understanding of how same day work can support impact in our city

- We will:**
- 1 Identify clear and relevant outcomes for and with participants and communities
  - 2 Identify same day work strategies that meet outcomes most effectively and efficiently
  - 3 Generate learning that influences other programs and city-wide strategies

learn with us



# **Implementation and Collaboration**



## Camden Experience



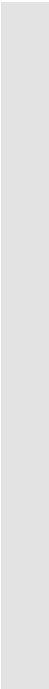
## Essential Question

How can we leverage and connect a Same Day Work effort to the broader ecosystem in order to maximize the economic security of Philadelphia's citizens?



## Gathering Ideas

How can we best engage and involve you in this work moving forward?







We appreciate you coming today, for listening and sharing your thoughts.



From this meeting, we'll be sharing back a summary of what was discussed.



We look forward to more engagement opportunities around our collective work.

**Thank you**

Have questions?  
Need more information?

[info@scattergoodfoundation.org](mailto:info@scattergoodfoundation.org)



SCATTER**GOOD**  
THINK|DO|SUPPORT

